

Soiled Tray Accumulator

saves space...increases efficiency



The Bi-line soiled tray accumulator system provides the maximum efficiency, style and function in a minimum amount of space.

State-of-the-art design reduces the labor required for bussing operations.



Multi-Loop Accumulator

STANDARD FEATURES

- Stainless steel construction
- Accumulator is free-standing
- Customized length and capacity
- 1-5/8" [41mm] O.D. stainless steel tubular legs
- Stainless steel access panels
- 16 gauge stainless steel welded wire carriers
- Low-friction drive rollers
- Low maintenance components
- A.C. motor with variable speed A.C. inverter control
- Removable tray shelving
- Easy access controls
- Open design facilitates cleaning



QUICK FACTS

Frame

12 gauge stainless steel

Tables

14 gauge counter height tabling
Floor drain applications without tabling

Motor

Type A.C. motor with variable speed A.C. inverter control

Tray Carriers

Choice of open or 3-sided closed design
Carriers hold either 4 or 5 trays

Anti-jam Protection

Anti-jam switch prevents accumulator from turning when tray is improperly inserted

Multi-Loop Accumulator

DETAILED SPECIFICATIONS

Design and Construction: Multi-Loop Accumulator frame is constructed of 12 gauge stainless steel channel crossbraces on approx. 3' [914mm] centers, supporting the frame. The accumulator comes equipped with 14 gauge tables or without specified at time of order.

The accumulator is a free-standing unit supported by 1-5/8" O.D. stainless steel legs with adjustable feet and bracing. All bracing is welded and finished. Optional adjustable flanged feet are available for bolting the unit to flooring.

Motor/Drive. Accumulator is driven by a gear-head-type, variable-speed motor controlled by an On/Off switch wired to a water-tight AC solid state inverter with overload protection in NEMA-rated enclosure.

Access panels to motor area and radius panels on ends are 18 gauge stainless steel. Top is removable for access to motor and gearing.

Tray Carriers. Standard tray carriers are open type design constructed of Type 304 stainless steel. Carriers are removable for easy cleaning.

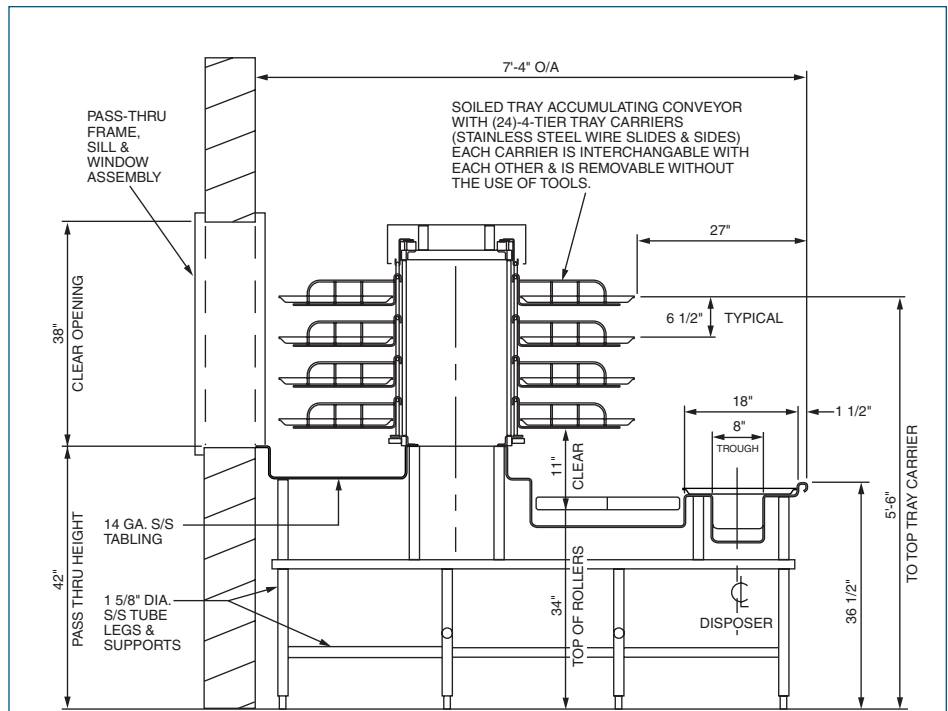
Optional tray carriers are enclosed on 3 sides, removable and constructed of Type 304 stainless steel.

Tray carriers are designed to receive all size trays. The number of carriers is determined by the overall length of the accumulator. Each carrier may hold either 4 or 5 trays (specified at time of order).

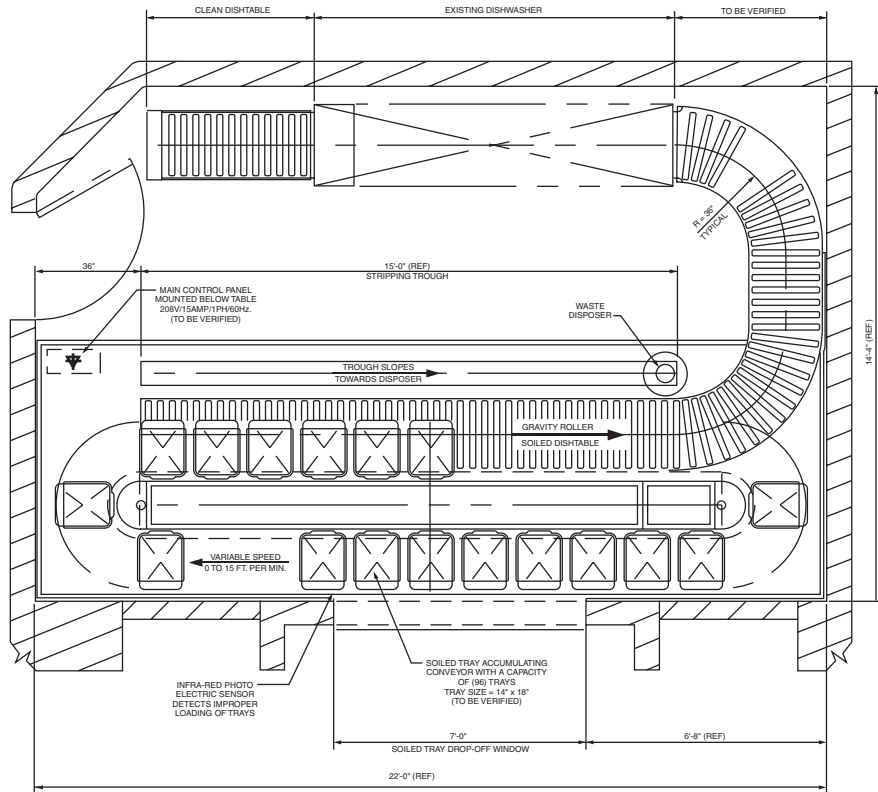
Tray carriers are mechanically connected, to form a continuous chain for either CW or CCW rotation.

Anti-Jam Switch. The accumulator is equipped with an anti-jam switch in the event that a tray is improperly loaded.

Approvals. This machine is manufactured to the highest standards including applicable CSA and NSF standards.



TYPICAL SECTION



Bi-line Systems
P. O. Box 16009
Winston-Salem
NC 27115

Tel: 336/661-1951
Fax: 336/661-0498

bi-line@bi-line.net

2674 North Service Rd.
Jordan Station
Ontario, Canada L0R 1S0

Tel: 905/562-6630
Fax: 905/562-5422

www.bi-line.net

Due to an ongoing value analysis program at Bi-line, specifications contained in this catalog are subject to change without notice.